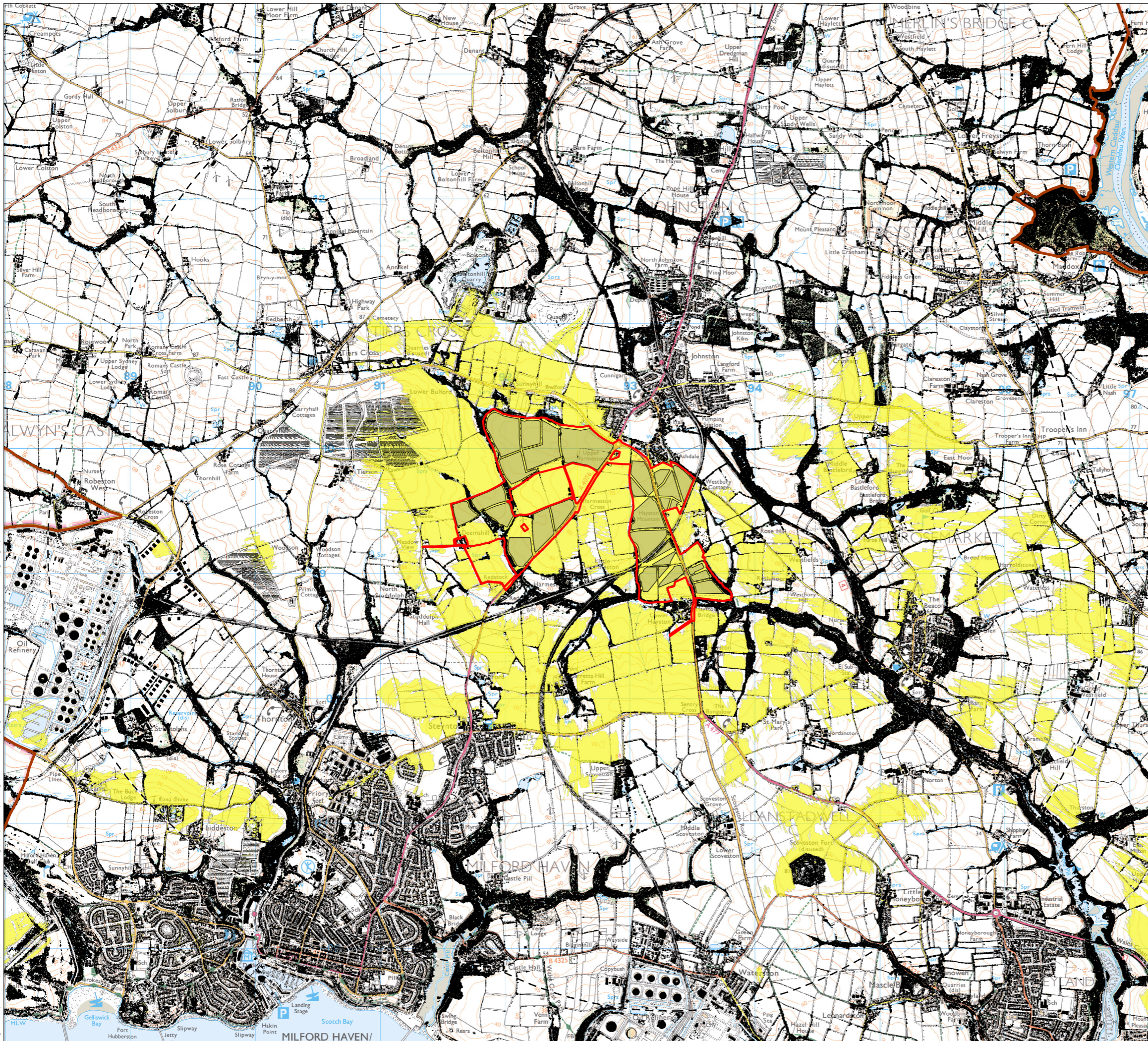




Great Harmeston Solar Farm Environmental Statement

Figure 5.8 Screened Zone of
Theoretical Visibility.





- KEY**
- Site Boundary
 - 3km Buffer
 - Proposed Development
 - National Parks
 - Surface Features extracted from LiDAR > 1m
 - Screened Zone of Theoretical Visibility - 3m Development Height

DataMap Wales Screened ZTV Production Information -

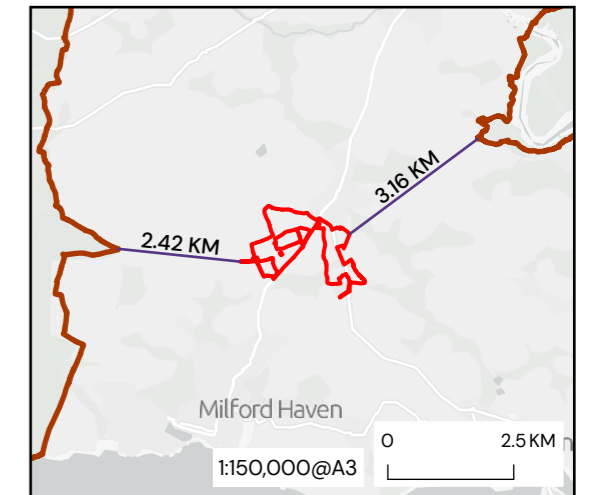
- DataMap Wales LiDAR data has been utilised; combining the Digital Terrain Model (DTM) and Digital Surface Model (DSM) to derive screening features.

This method of ZTV takes into account the varied heights of screening features as derived from historic LiDAR surveys, and is therefore representative of the time of survey for that area. Any changes in vegetation cover or building addition/removal will not be taken into account after this date.

- Viewer height set at 1.7m (in accordance with para 6.11 of GLVIA Third edition)
- Calculations include earth curvature and light refraction

N.B. This Zone of Theoretical Visibility (ZTV) image illustrates the theoretical extent of where the development may be visible from, assuming 100% atmospheric visibility.

Date of LiDAR survey data: 2020-2023



Contains OS data © Crown Copyright and database right 2026. Contains data from OS Zoomstack

REV	DATE	DESCRIPTION
-----	------	-------------

FIGURE 5.8: LIDAR SCREENED ZONE OF THEORETICAL VISIBILITY

GREAT HARMESTON

ARISE RENEWABLE ENERGY UK LTD

DATE	SCALE	DRAWN	APPROVED	
11/03/2026	1:30,000@A3	NC/CS	RCH	
SHEET	REV	N	0	0.5KM
	D	▲		

DRAWING NUMBER
P24-1037_EN_02

