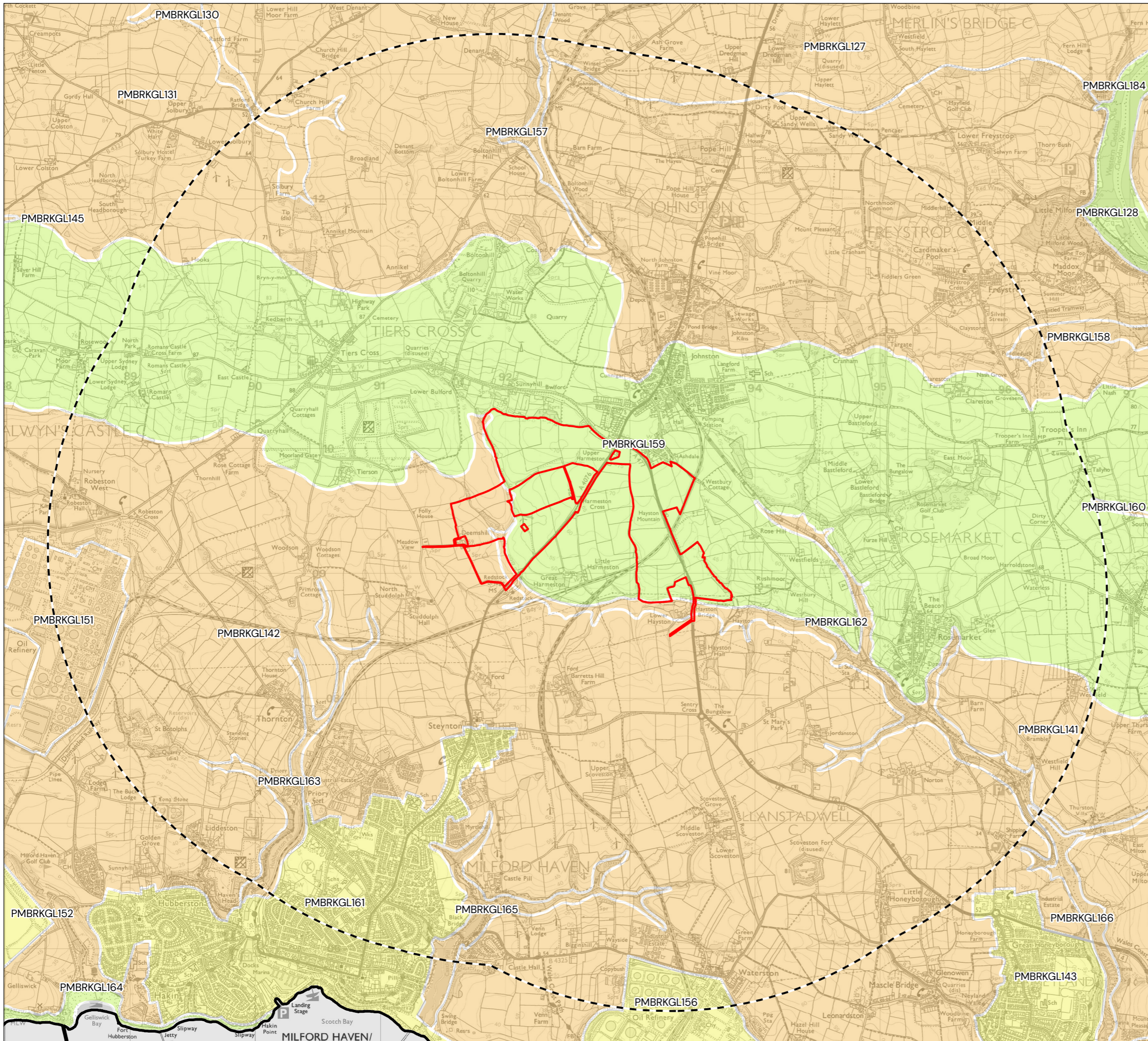




# Great Harmeston Solar Farm Environmental Statement

Figure 5.5 LANDMAP Plans.





**KEY**

- Site Boundary
- District Authority Boundary

**LANDMAP Geological Landscape Overall Evaluation**

- High
- Moderate
- Low

REV	DATE	DESCRIPTION

**FIGURE 5.5: LANDMAP GEOLOGICAL LANDSCAPE**

**GREAT HARMESTON**  
**ARISE RENEWABLE ENERGY UK LTD**

DATE	SCALE	DRAWN	APPROVED
11/03/2026	1:30,000@A3	CS	RCH

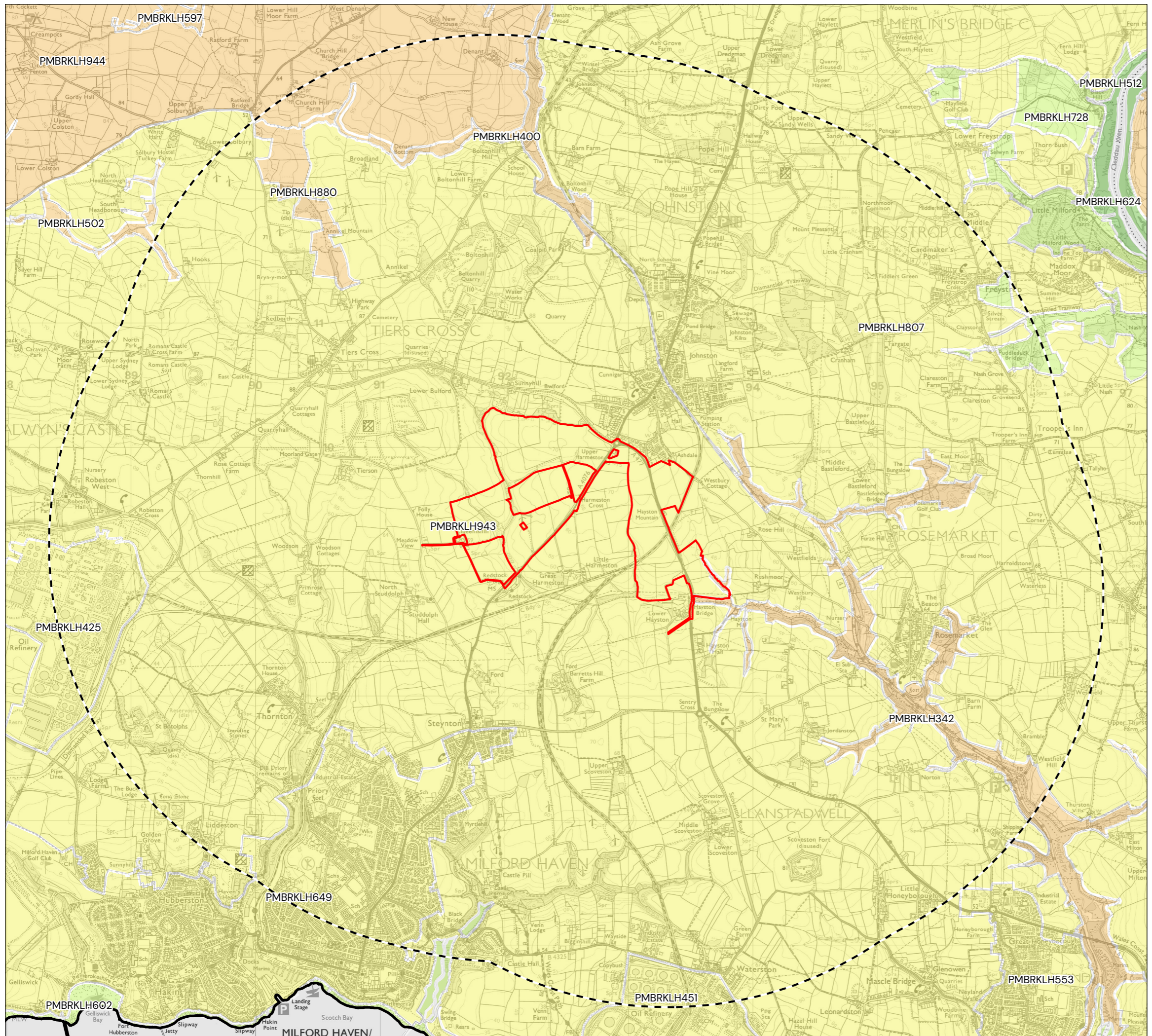
SHEET	REV	N	O	0.5KM
1	A	▲	└───┘	

DRAWING NUMBER  
P24-1037\_EN\_08

**PEGASUS GROUP**

All intellectual property rights (including but not limited to copyright) subsisting in or arising out of this drawing and the building works depicted are owned by Pegasus Planning Group Ltd (Pegasus Group) and may not be copied, adapted, disseminated, redistributed, reproduced and/or otherwise used without a written licence. Pegasus Group accepts no liability for any use of this drawing other than for its original purpose and by the original client except in circumstances where approval for use has been provided by Pegasus Group in writing. Use only written dimensions. Drawing prepared for planning application purposes only. Do not scale (or use) for construction, sales or any other purpose. Any queries to be reported to Pegasus Planning Group. Limited 2025. Use of this drawing is subject to the Terms & Conditions available at: @pegasusgroup.co.uk. © Crown copyright and database rights 2025. Ordnance Survey. ACO000808022.

All intellectual Property Rights (including but not limited to copyright) subsisting in or arising out of this drawing and the building works depicted are owned by Pegasus Planning Group Ltd (Pegasus Group) and may not be copied, adapted, disseminated, redistributed, reproduced and/or otherwise used without a written licence. Pegasus Group accepts no liability for any use of this drawing other than for its original purpose and by the original client except in circumstances where approval for use has been provided by Pegasus Group in writing. Use only written dimensions. Drawing prepared for planning application purposes only. Do not scale (or use) for construction, sales or any other purpose. Any queries to be reported to Pegasus Planning Group. Limited 2025. Use of this drawing is subject to the Terms & Conditions available at: @pegasusgroup.co.uk. © Crown copyright and database rights 2025. Ordnance Survey. ACO000608022.



**KEY**

- Site Boundary
- District Authority Boundary

**LANDMAP Landscape Habitats Overall Evaluation**

- Outstanding
- High
- Moderate
- Low

REV	DATE	DESCRIPTION

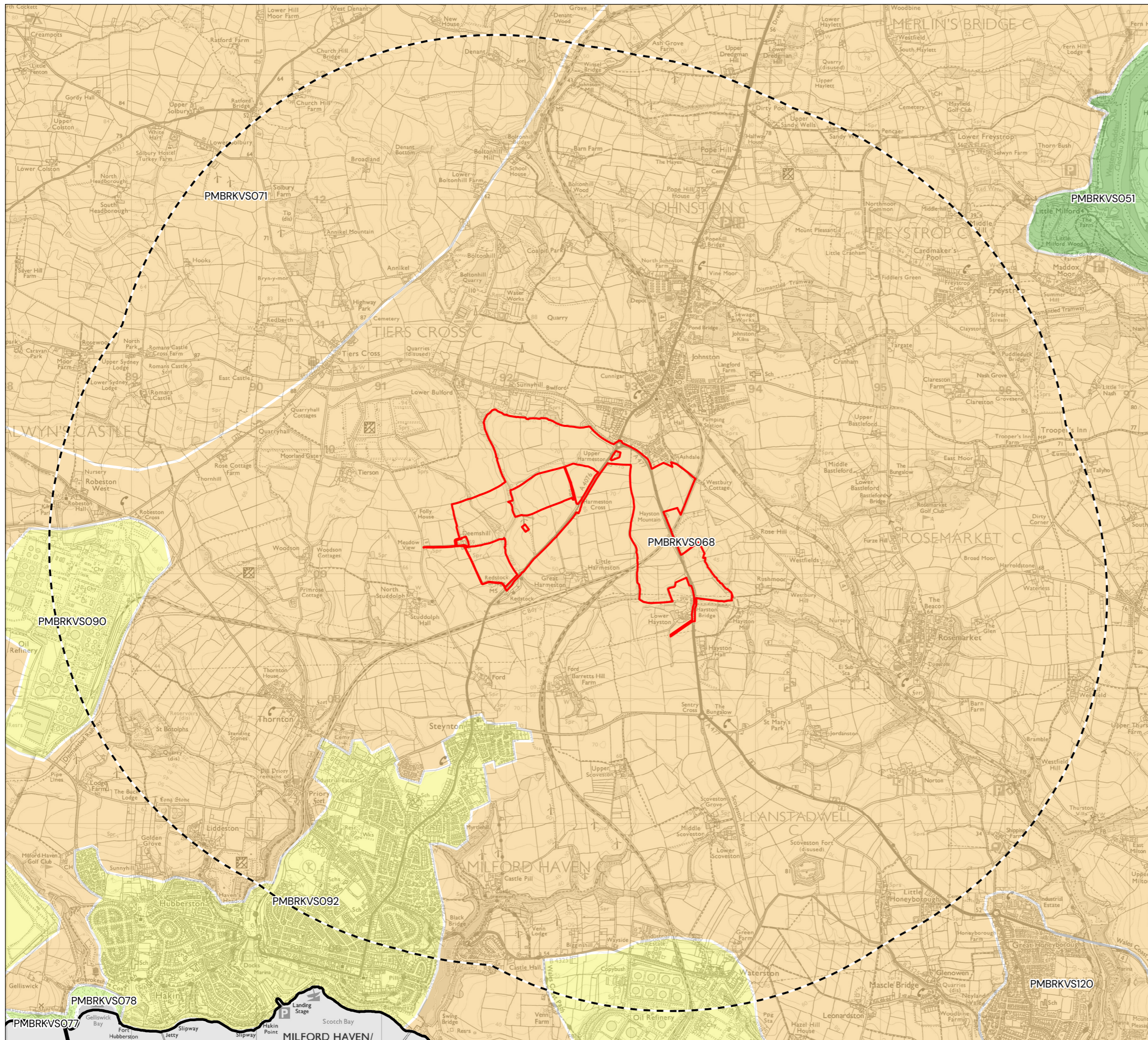
**FIGURE 5.5: LANDMAP LANDSCAPE HABITATS**

**GREAT HARLESTON**  
**ARISE RENEWABLE ENERGY UK LTD**

DATE	SCALE	DRAWN	APPROVED
11/03/2026	1:30,000@A3	CS	RCH
SHEET	REV	N	0 0.5KM
2	A		

Contains OS data © Crown Copyright and database right 2025

All intellectual Property Rights (including but not limited to copyright) subsisting in or arising out of this drawing and the building works depicted are owned by Pegasus Planning Group Ltd (Pegasus Group) and may not be copied, adapted, disseminated, redistributed, reproduced and/or otherwise used without a written licence. Pegasus Group accepts no liability for any use of this drawing other than for its original purpose and by the original client except in circumstances where approval for use has been provided by Pegasus Group in writing. Use only written dimensions. Drawing prepared for planning application purposes only. Do not scale (or use) for construction, sales or any other purpose. Any queries to be reported to Pegasus Planning Group. Limited 2025. Use of this drawing is subject to the Terms & Conditions available at @pegasusgroup.co.uk. © Crown copyright and database rights 2025. Ordnance Survey, AC0000808022.



**KEY**

- Site Boundary
- District Authority Boundary

**LANDMAP Visual and Sensory Overall Evaluation**

- Outstanding
- High
- Moderate
- Low

REV	DATE	DESCRIPTION

**FIGURE 5.5: LANDMAP VISUAL AND SENSORY**

**GREAT HARMESTON**

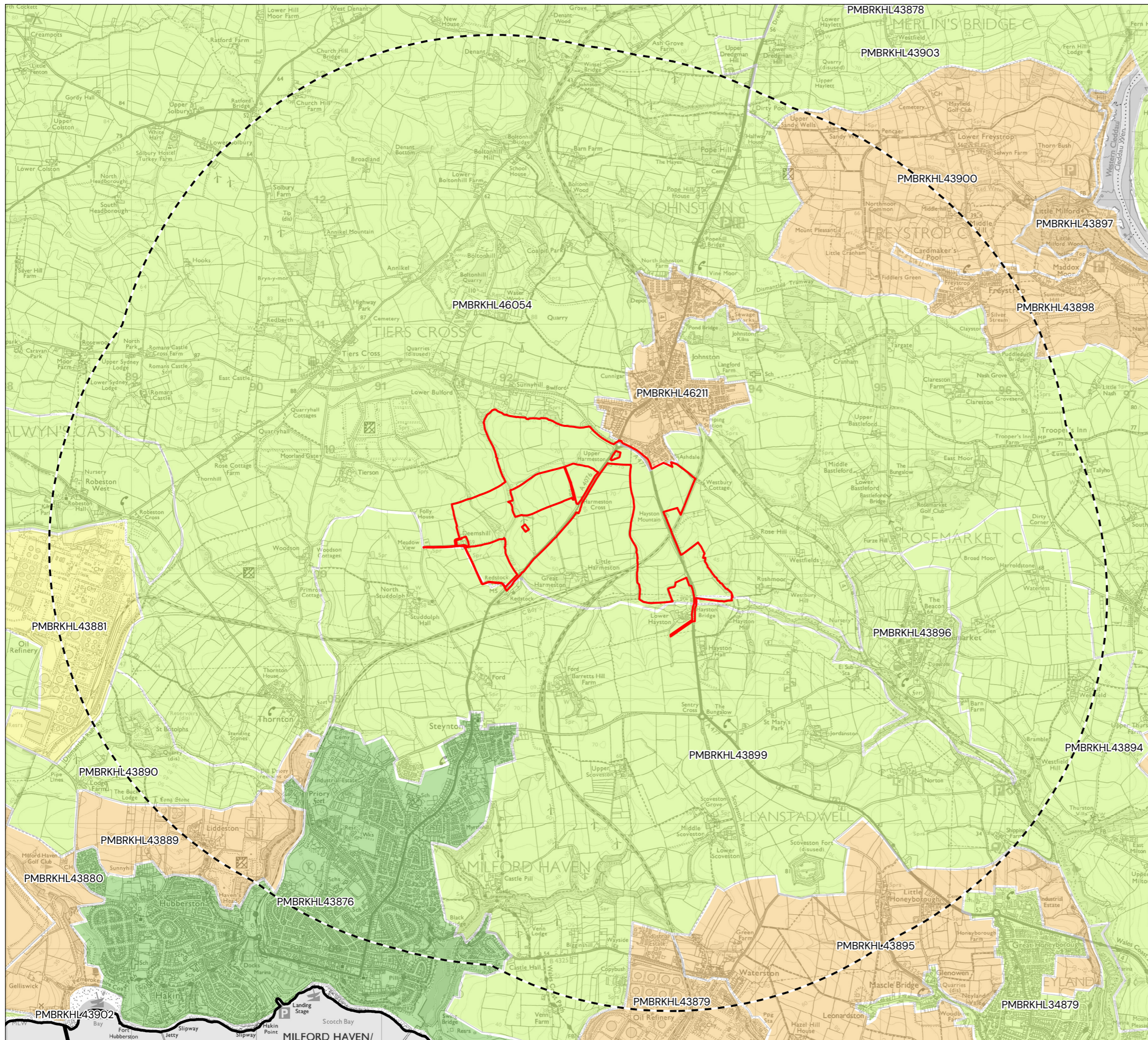
**ARISE RENEWABLE ENERGY UK LTD**

DATE	SCALE	DRAWN	APPROVED
11/03/2026	1:30,000@A3	CS	RCH

SHEET	REV	N	O	0.5KM
3	A	▲	└───┘	

DRAWING NUMBER P24-1037\_EN\_10

All intellectual Property Rights (including but not limited to copyright) subsisting in or arising out of this drawing and the building works depicted are owned by Pegasus Planning Group Ltd (Pegasus Group) and may not be copied, adapted, disseminated, redistributed, reproduced and/or otherwise used without a written licence. Pegasus Group accepts no liability for any use of this drawing other than for its original purpose and by the original client except in circumstances where approval for use has been provided by Pegasus Group in writing. Use only written dimensions. Drawing prepared for planning application purposes only. Do not scale (or use) for construction, sales or any other purpose. Any queries to be reported to Pegasus Planning Group. Limited 2025. Use of this drawing is subject to the Terms & Conditions available at: [pegasusgroup.co.uk](http://pegasusgroup.co.uk). © Crown copyright and database rights 2025. Ordnance Survey, AC0000808022.



**KEY**

- Site Boundary
- District Authority Boundary

**LANDMAP Historic Landscape Overall Evaluation**

- Outstanding
- High
- Moderate
- Low

REV	DATE	DESCRIPTION

**FIGURE 5.5: LANDMAP HISTORIC LANDSCAPE**

**GREAT HARLESTON**

**ARISE RENEWABLE ENERGY UK LTD**

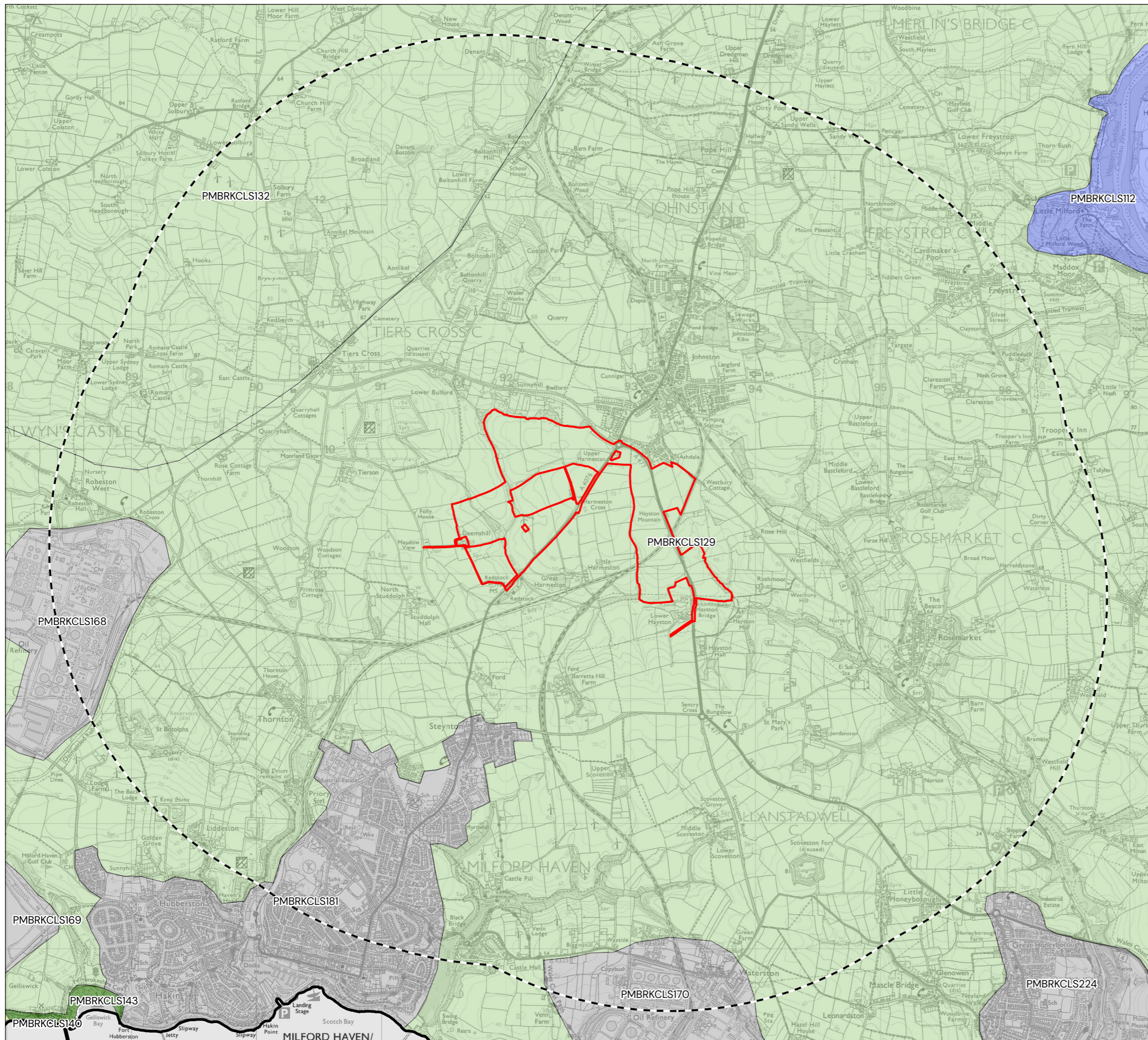
DATE	SCALE	DRAWN	APPROVED
11/03/2026	1:30,000@A3	CS	RCH

SHEET	REV	N	O	0.5KM
4	A	▲	└───┘	

DRAWING NUMBER  
P24-1037\_EN\_11



All intellectual Property Rights (including but not limited to copyright) subsisting in or arising out of this drawing and the building works depicted are owned by Pegasus Planning Group Ltd (Pegasus Group) and may not be copied, adapted, disseminated, redistributed, reproduced and/or otherwise used without a written licence. Pegasus Group accepts no liability for any use of this drawing other than for its original purpose and by the original client except in circumstances where approval for use has been provided by Pegasus Group in writing. Use only written dimensions. Drawing prepared for planning application purposes only. Do not scale (or use) for construction, sales or any other purpose. Any changes to be reported to Pegasus Planning Group. Limited 2025. Use of this drawing is subject to the Terms & Conditions available at: [pegasusplanning.co.uk](https://pegasusplanning.co.uk). © Crown copyright and database rights 2025. Ordnance Survey. ACO000805022.



**KEY**

- Site Boundary
- District Authority Boundary

**LANDMAP Cultural Landscape Services Classification**

- Cliffs & Cliff Tops
- Intertidal
- Open Rolling Lowland
- River
- Urban

REV	DATE	DESCRIPTION
-----	------	-------------

**FIGURE 5.5: LANDMAP CULTURAL LANDSCAPE SERVICES**

GREAT HARMESTON			
ARISE RENEWABLE ENERGY UK LTD			
DATE	SCALE	DRAWN	APPROVED
11/03/2026	1:30,000@A3	CS	RCH
SHEET	REV	N	0 0.5KM
5	A		

DRAWING NUMBER P24-1037\_EN\_12

