

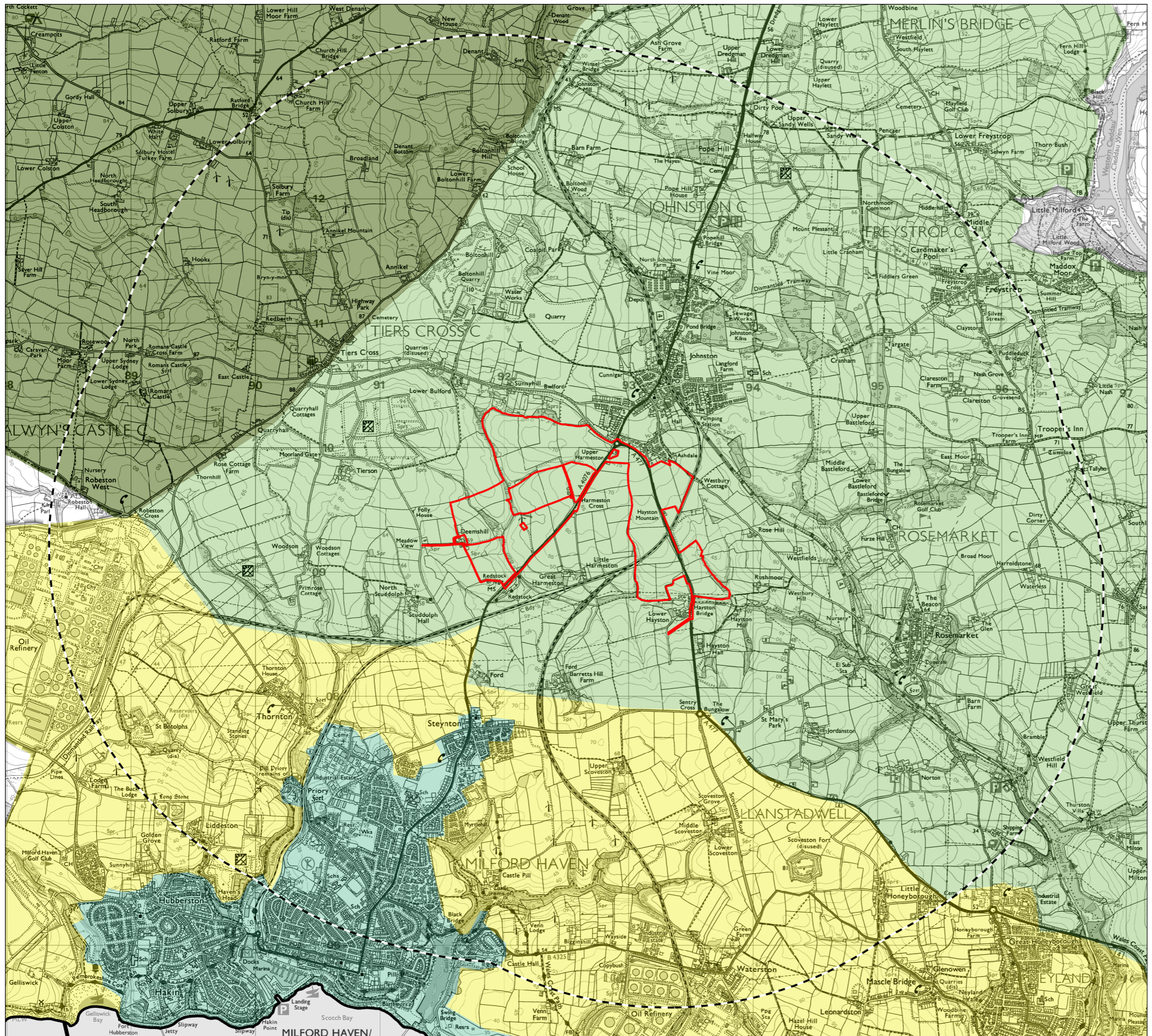


# Great Harmeston Solar Farm Environmental Statement

Figure 5.4 Landscape Character Plan.



All intellectual Property Rights (including but not limited to copyright) subsisting in or arising out of this drawing and the building works depicted are owned by Pegasus Planning Group Ltd (Pegasus Group) and may not be copied, adapted, disseminated, reproduced and/or otherwise used without a written licence. Pegasus Group accepts no liability for any use of this drawing other than for its original purpose and by the original client except in circumstances where approval for use has been provided by Pegasus Group in writing. Use only written dimensions. Drawing prepared for planning application purposes only. Do not scale (or use) for construction, sales or any other purpose. Any queries to be reported to Pegasus Planning Group. Limited 2025. Use of this drawing is subject to the Terms & Conditions available at: [pegasusgroup.co.uk](http://pegasusgroup.co.uk). © Crown copyright and database rights 2025. Ordnance Survey. AC0000860822.



**KEY**

- Site Boundary
- District Authority Boundary

**Pembrokeshire Landscape Character Assessment – Landscape Character Area**

- 7 – Pelcomb and Simpson Cross
- 9 – Johnston Lowlands
- 10 – The Haven North
- 22 – Milford Haven

REV	DATE	DESCRIPTION		
<p><b>FIGURE 5.4: LANDSCAPE CHARACTER – PEMBROKESHIRE</b></p> <p><b>GREAT HARMESTON</b></p> <p><b>ARISE RENEWABLE ENERGY UK LTD</b></p>				
DATE	SCALE	DRAWN	APPROVED	
13/03/2026	1:30,000@A3	CS	RCH	
SHEET	REV	N	O	0.5KM
-	D	▲	└─┘	
DRAWING NUMBER		PEGASUS GROUP		
P24-1037_EN_07				